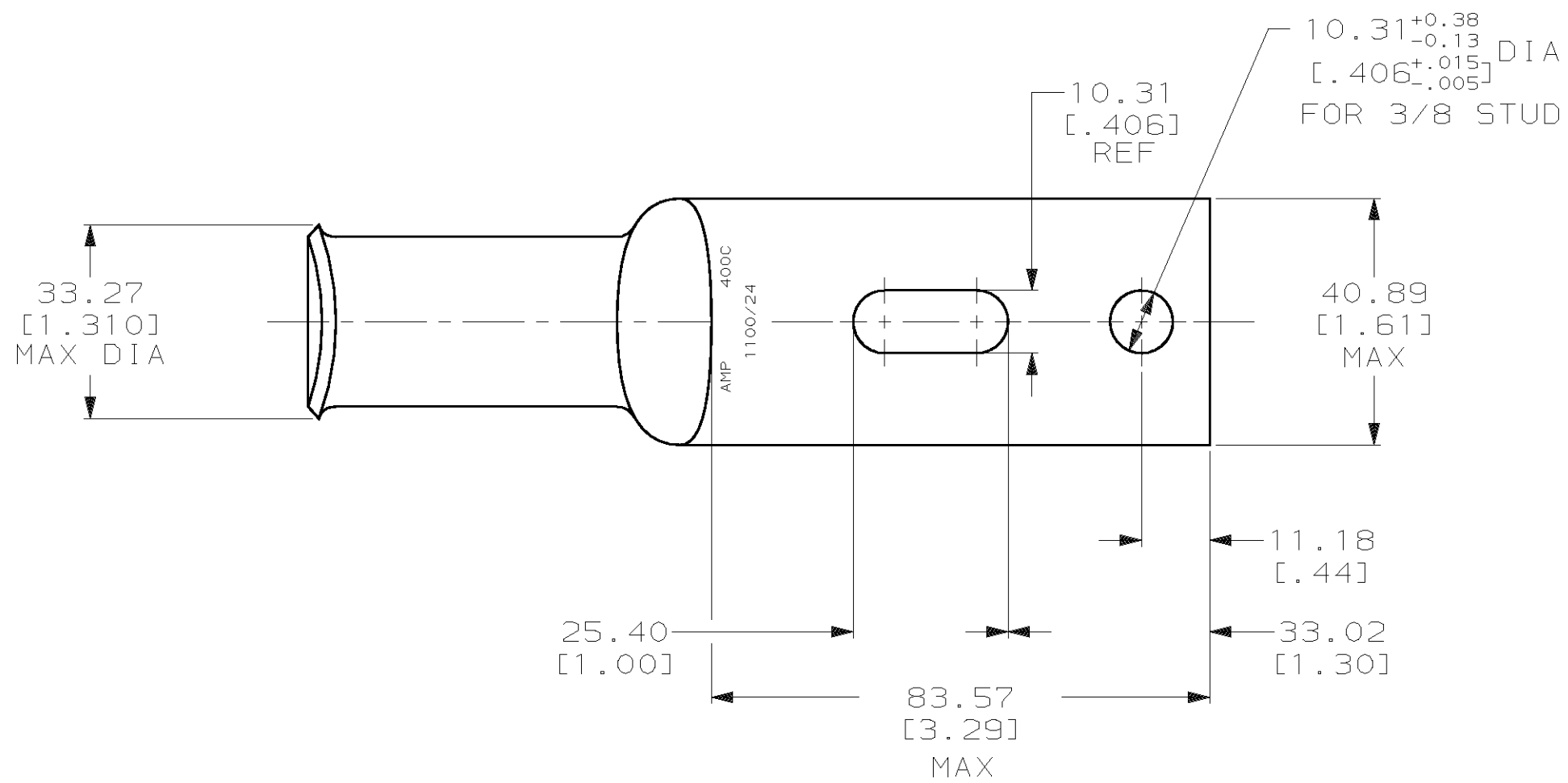
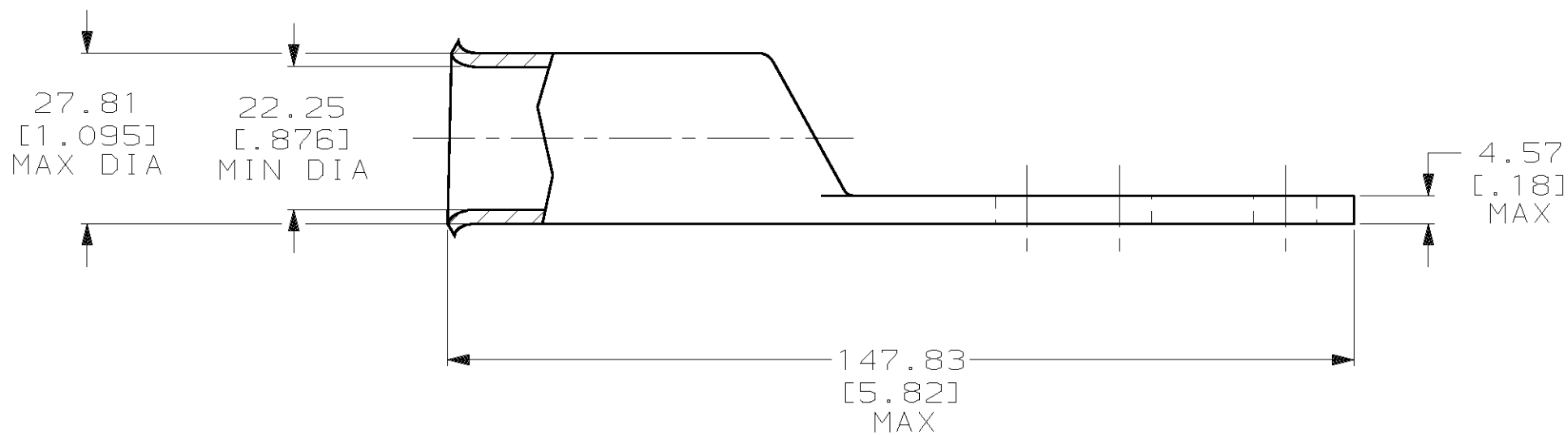


THIS DRAWING IS UNPUBLISHED. RELEASED FOR PUBLICATION .19  
 © COPYRIGHT 19 BY AMP INCORPORATED. ALL INTERNATIONAL RIGHTS RESERVED.

LOC		DIST		P		F		REVISIONS		DATE	APPD
ZONE	LTR	DESCRIPTION									
G	86							C	REV PER 0G3A-0561-01	07OCT02	JR/MS



△ TIN PL 0.00381 [0.000150] MIN THK PER MIL-T-10727



276963

276963-1

PART NO

DO NOT SCALE PRINT. UNLESS SPECIFIED DIMENSIONS IN mm [INCHES] TOLERANCES ON :  
 2 PLC DEC ± 0.51 [0.020]  
 3 PLC DEC ± -  
 ANGLES ± -

MATERIAL  
 ANNEALED COPPER  
 ASTM B-75

DR 03/09/90  
 DK SCHRUM

CHK 24JAN95  
 MS FEHER

APPD 24JAN95  
 WJ VOCKROTH

APPD 24JAN95  
 TL SHUTTER

PRODUCT SPEC  
 108-30200

**AMP** AMP INCORPORATED  
 Harrisburg, Pa. 17105

NAME  
 TERMINAL, AMPPOWER,  
 WIRE SIZE: 400 MCM

FINISH  
 △

APPLICATION SPEC  
 -

WEIGHT  
 -

SIZE  
**C**

CAGE CODE  
 00779

DRAWING NO  
 276963

SCALE  
 1:1

SHEET  
 1 OF 1

